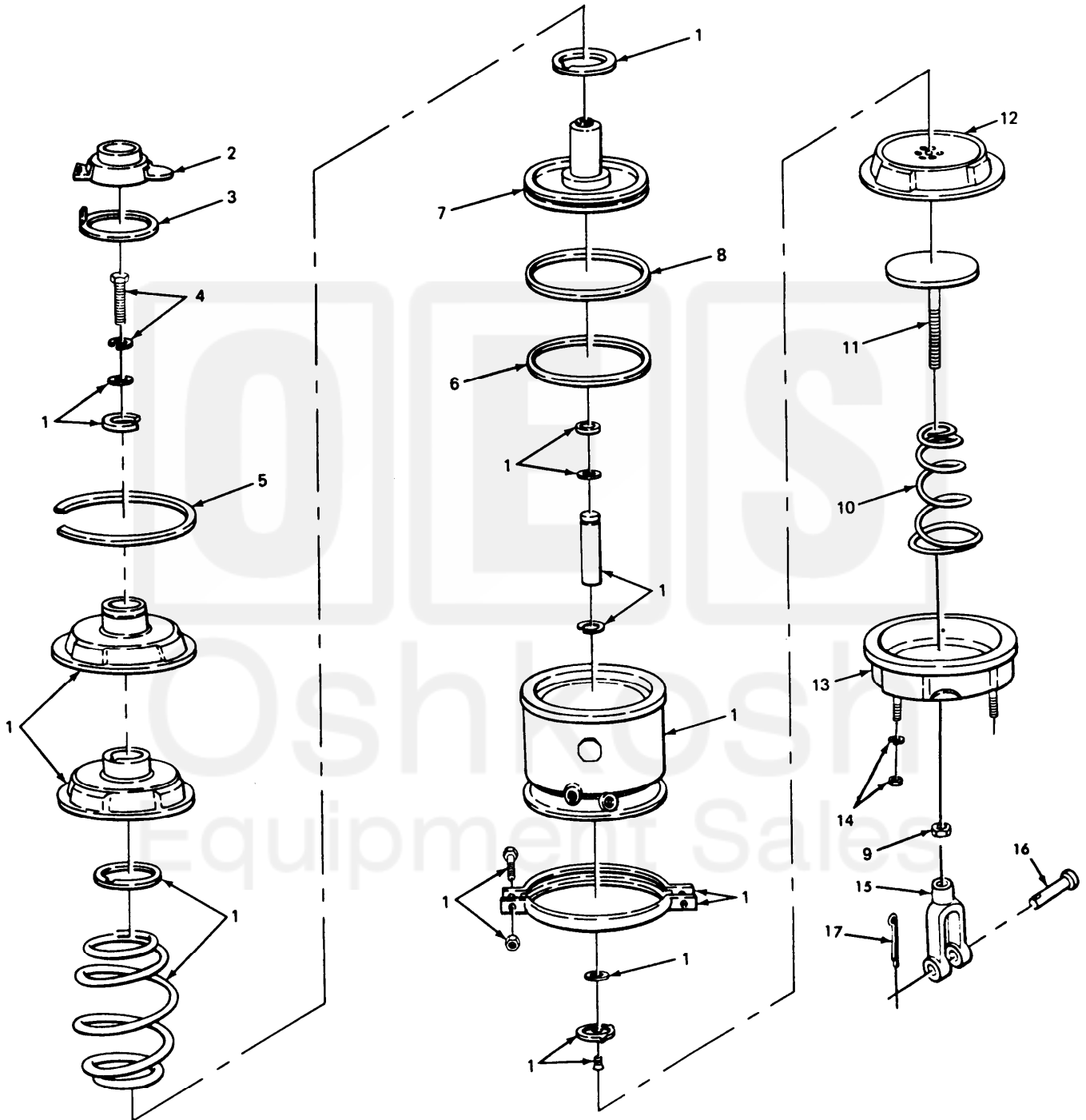


1
2 THRU 17



TA239539

FIGURE 175. TANDEM AXLE AIR BRAKE CHAMBER.

Current part is item (15,16) on diagram. Available at www.oshkoshequipment.com

SECTION II TM9-2320-270-34P				(5)	(6)
(1)	(2)	(3)	(4)		
ITEM NO.	SMR CODE	FSCM	PART NUMBER	DESCRIPTION AND USABLE ON CODE (UOC)	QTY
GROUP 1208 AIR BRAKE SYSTEM					
FIG. 175 TANDEM AXLE AIR BRAKE CHAMBER					
1	PAOFF	45152	1539930	CHAMBER,AIR BRAKE TANDEM AXLES	4
2	PAFZZ	15564	8206008	CAP,PROTECTIVE,DUST	4
3	PAFZZ	15564	9006001	BREATHER	1
4	PAFZZ	15564	9007007	PARTS KIT,BRAKE CHA	1
5	PAFZZ	15564	8052003	RING,RETAINING	1
6	PAFZZ	15564	8059004	RING,PISTCN	1
7	XDFZZ	15564	8240003	PISTON	1
8	PAFZZ	15564	8052010	RING,PISTON	1
9	KFFZZ	15564	8130004	JAM NUT N.P. CHAMBER KIT PART OF KIT P/N 9015109	4
10	KFFZZ	15564	8068003	SPRING RETURN N.P. CHAMBER KIT PART OF KIT P/N 9015109	4
11	KFFZZ	15564	9054004	PISTON,9ROD ASSY PART OF KIT P/N 9015109	1
12	PAFZZ	15564	8017136	DIAPHRAGM,CHAMBER,B	1
13	KFFZZ	15564	9015108	N.P. CHAMBER ASSY PART OF KIT P/N 9015109	4
14	KFFZZ	15564	9002001	NUT AND WASHER KIT N.P. CHAMBER KIT PART OF KIT P/N 9015109	4
15	PFFZZ	98343	194001-5	YOKE	1
16	PFOZZ	98343	05X1052	PIN,YOKE	1
17	PAOZZ	96906	MS24665-353	PIN,COTTER	1

END OF FIGURE



Current part is item (15,16) on diagram. Available at www.oshkoshequipment.com